

In-Line Filter LF Series

Long Type

LF-M5A

LF-M5AA

Short Type

LF-M5HA

LF-M5AA-C4

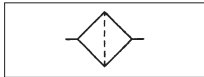
In-Line Type

LF-C4

LF-C6



JIS Sign



Specifications

Model No.	Unit	LF-M5A	LF-M5AA
Fluid		Non-lubricated air <small>Note)</small>	
Port size	IN	M5 Female thread	M5 Female thread
	OUT	M5 Female thread	M5 Male thread
Operating pressure	kPa	-100 ~ 0	
Proof pressure	MPa	0.6	
Ambient temperature	°C	-5 ~ 60 <small>Note)</small>	
Filter rating	μm	60 / 40	
Weight	g	M5A:9	9

Model No.	Unit	LF-M5HA	LF-M5AA-C4	LF-C4	LF-C6
Fluid		Non-lubricated air <small>Note)</small>			
Port size	IN	M5 Female thread	φ4 Push-in fitting	φ4 Push-in fitting	φ6 Push-in fitting
	OUT	M5 Male thread	M5 Male thread	φ4 Push-in fitting	φ6 Push-in fitting
Operating pressure	kPa	-100 ~ 0			
Proof pressure	MPa	0.6			
Ambient temperature	°C	-5 ~ 60 <small>Note)</small>			
Filter rating	μm	60			
Weight	g	9			

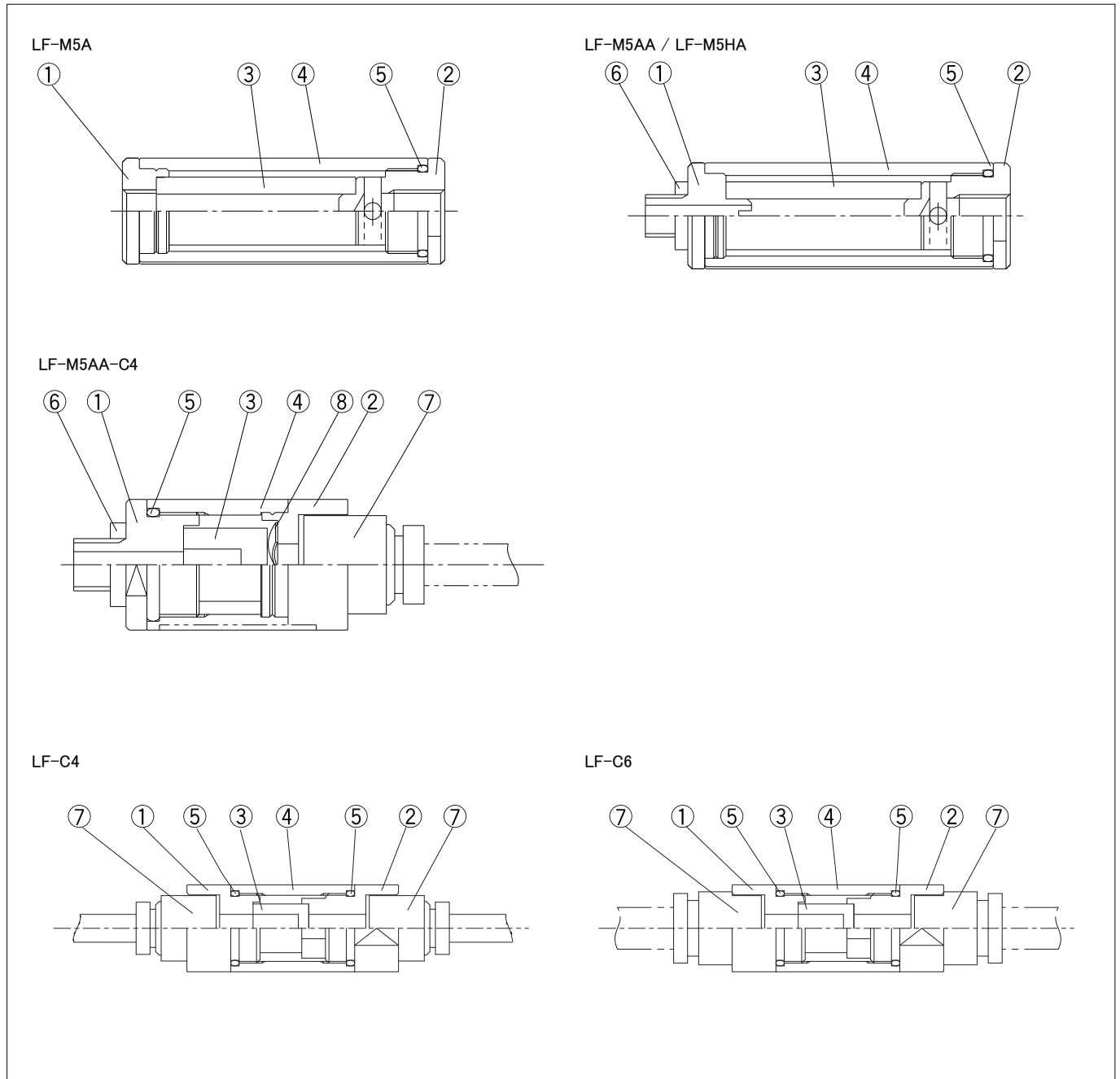
Note) When temperature goes down below 5°C, completely dry air shall be supplied to prevent from freezing or dewing.

Caution

Those filters cannot be used in the environment that contain organic solvent.

In-Line Filter / LF series

Structure



Main parts

No.	Parts name	Material
①	Body A	Aluminum alloy
②	Body B	Aluminum alloy
③	Filter element	PVF
④	Case	Synthetic resin
⑤	O-ring	NBR
⑥	Gasket	Synthetic resin
⑦	Push-in fitting for $\Phi 4\text{mm}$ tube	-
⑧	Washer	Spring steel
⑨	Bronze element	Bronze
⑩	Case	Stainless

Maintenance parts

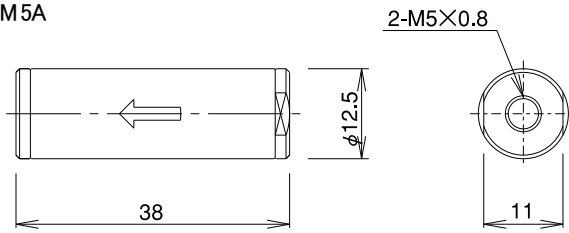
Parts name	Filter rating	Model No.
For LF-M5A/LF-M5AA	60 μm	LF-M5-E-60
	40 μm	LF-M5-E-40
For LF-M5HA	60 μm	LF-H-E-60
For LF-M5AA-C4		LF-C-E-60
For LF-C4/C6		

In-Line Filter / LF series

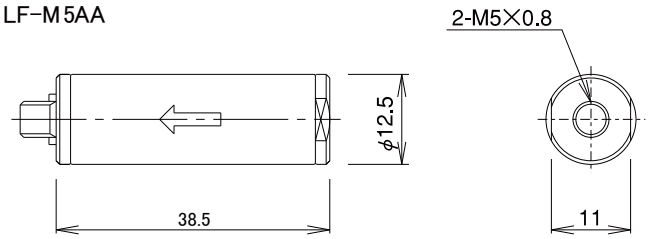
Dimensions

(Unit:mm)

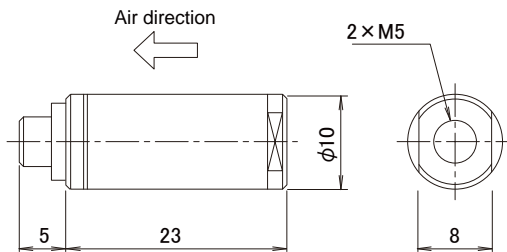
LF-M5A



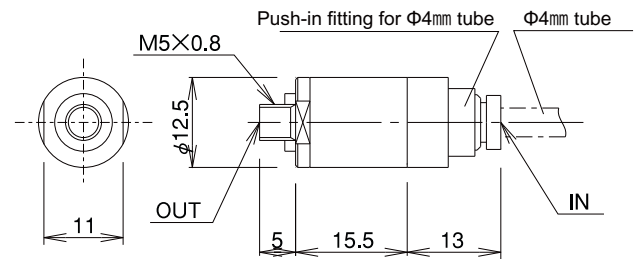
LF-M5AA



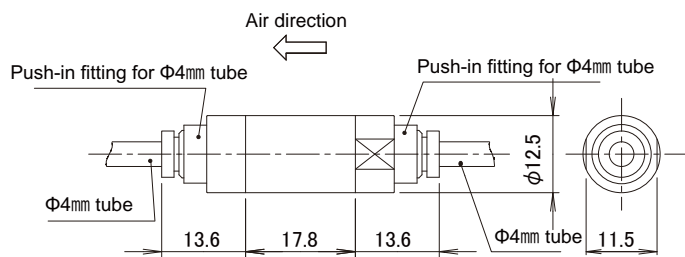
LF-M5HA



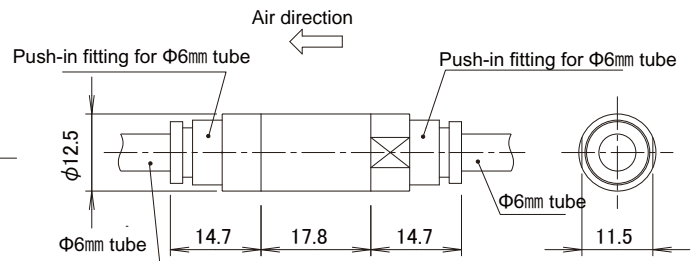
LF-M5AA-C4



LF-C4



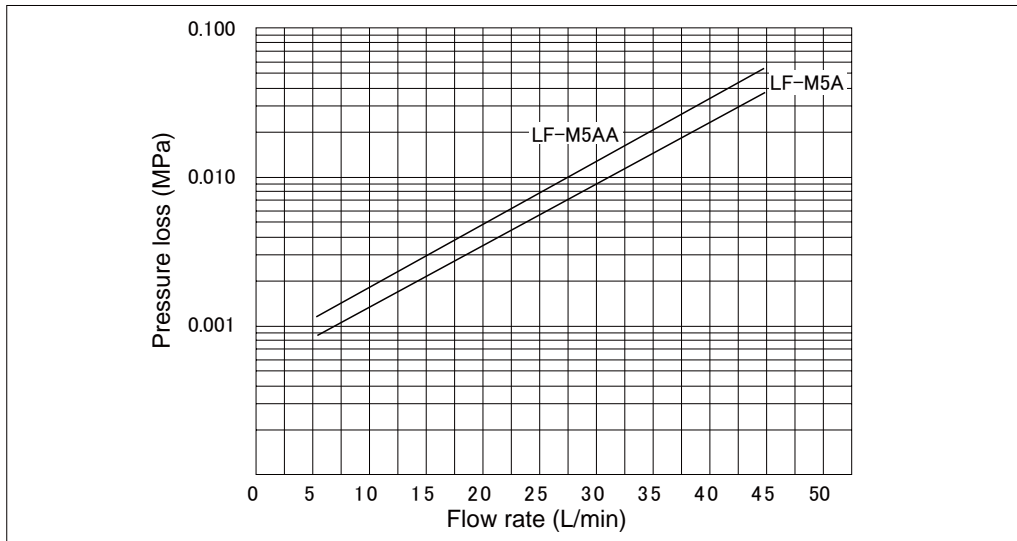
LF-C6



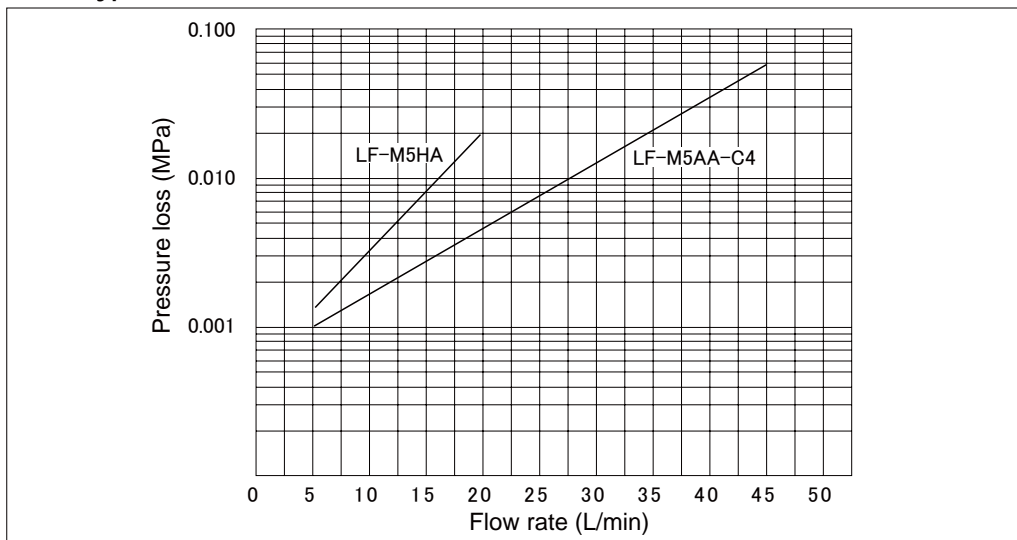
In-Line Filter / LF series

Flow characteristics

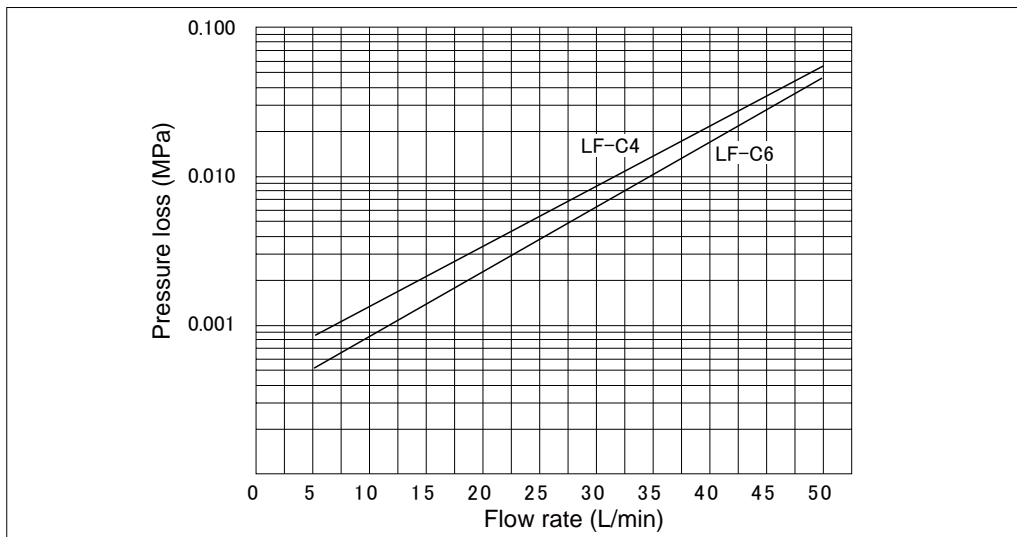
Long Type



Short Type



In-line Type

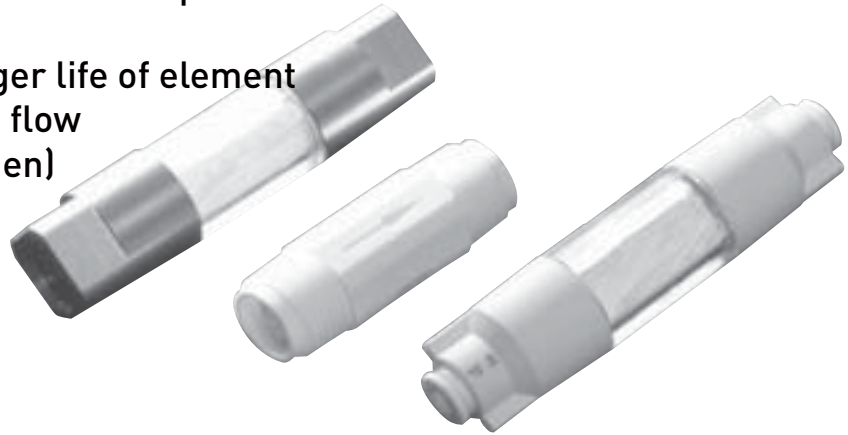


Fine In-Line Filter

LFM Series



- Hollow fiber membrane to catch finer particles.
- Fine filter rating, 0.01 μ m
- Wider filter area keeps longer life of element
- Low pressure loss and high flow
- Apply dry air and N₂ (nitrogen)



Order Instruction

LFM - C4
①

① Piping

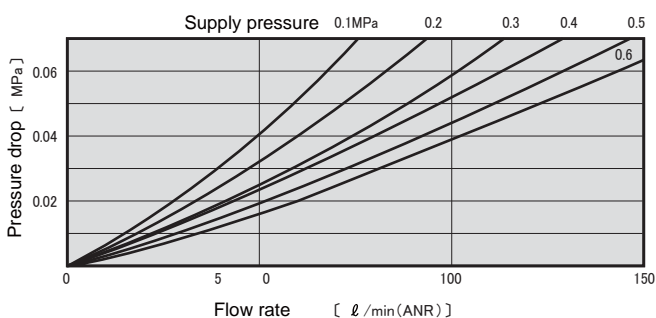
C4	Push-in fitting for $\Phi 4$ tube	Rc $\frac{1}{4}$	Rc $\frac{1}{4}$
C6	Push-in fitting for $\Phi 5$ tube	R $\frac{3}{8}$	R $\frac{3}{8}$
C8	Push-in fitting for $\Phi 6$ tube		

Specifications

Model No.	Unit	LFM-C□	LFM-Rc $\frac{1}{4}$	LFM-R $\frac{3}{8}$
Fluid		Non-lubricated air, nitrogen <small>Note)</small>		
Piping		$\phi 4, \phi 6, \phi 8$	Rc $\frac{1}{4}$	R $\frac{3}{8}$
Operating pressure	MPa	0 ~ 0.8		
Ambient temperature	°C	5 ~ 50		
Filter rating	μ m	0.01		
Weight	g	15	9	84

Note) When temperature goes down below 5°C, completely dry air shall be supplied to prevent from freezing or dewing.

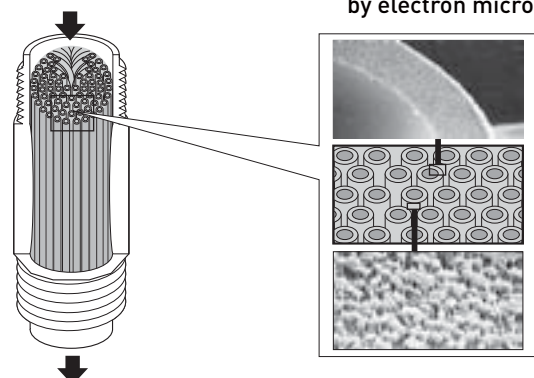
Flow Characteristics



Structure

■ Membrane parts structure

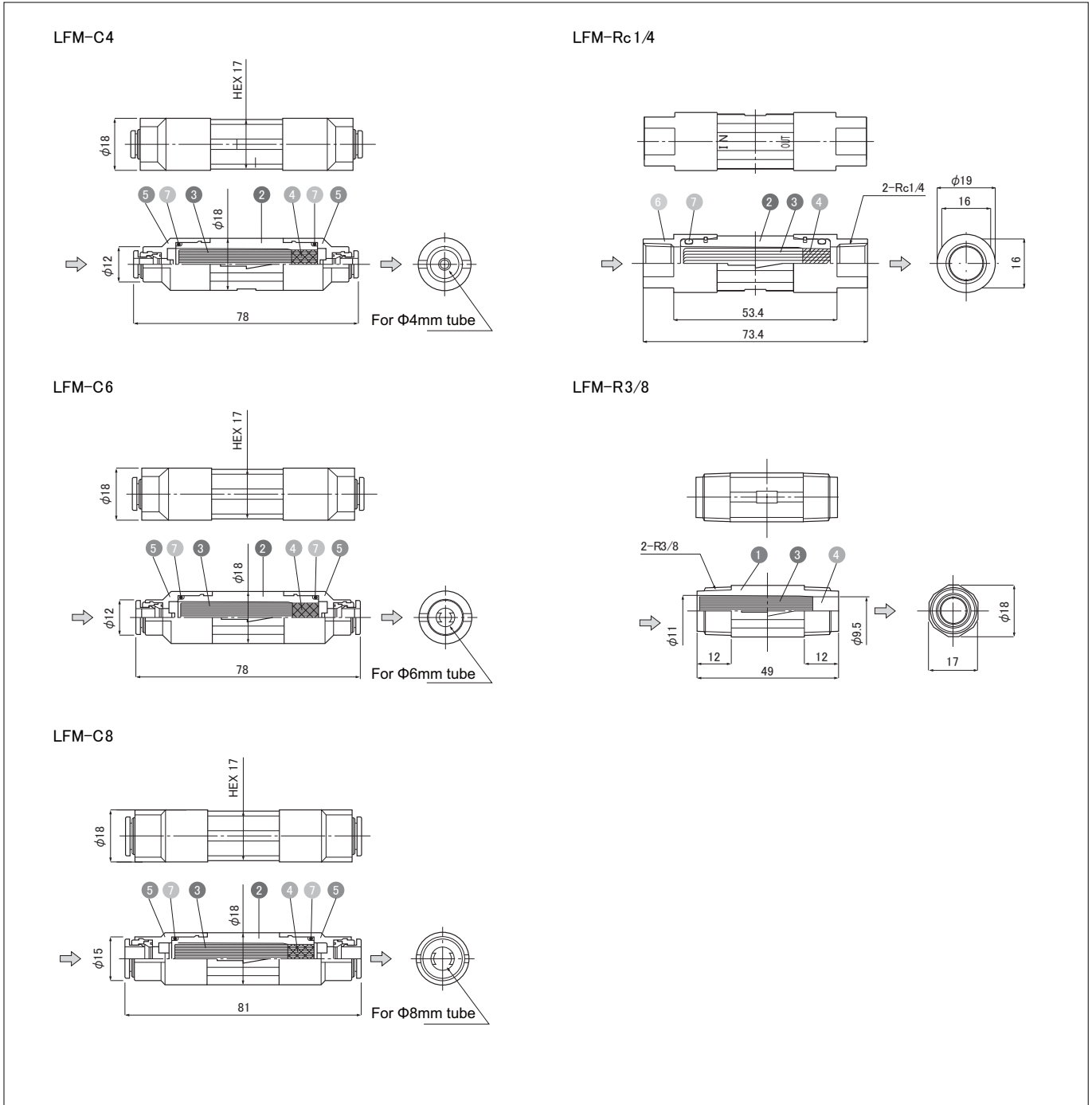
■ Hollow fiber membrane
Reference picture taken by electron microscope



Fine In-Line Filter / LFM series

Structure / Dimensions

(Unit: mm)



Main parts

No.	Parts name	Material
①	Case (White)	Synthetic resin (Glass fiber)
②	Case (Transparence)	Synthetic resin
③	Hollow fiber membrane	Synthetic resin
④	Potting agent	Synthetic resin
⑤	Fitting parts (C4,C6,C8)	Synthetic resin + Stainless
⑥	Fitting parts (Rc1/4)	Stainless
⑦	O-ring	NBR

⚠ Caution

- The material of the case is plastic. When aggressive chemical for plastic, direct sunlight, UV and etc. expose the item continuously, the item might have danger to be exploded. Don't use it in those environment.
- When air contain oil mist, please install filter such as oil mist separator in order to avoid short life of filter element of those in-line filters.